

Conducting a Pre Start

11 Steps

Created by

Plant Assessor

Creation Date

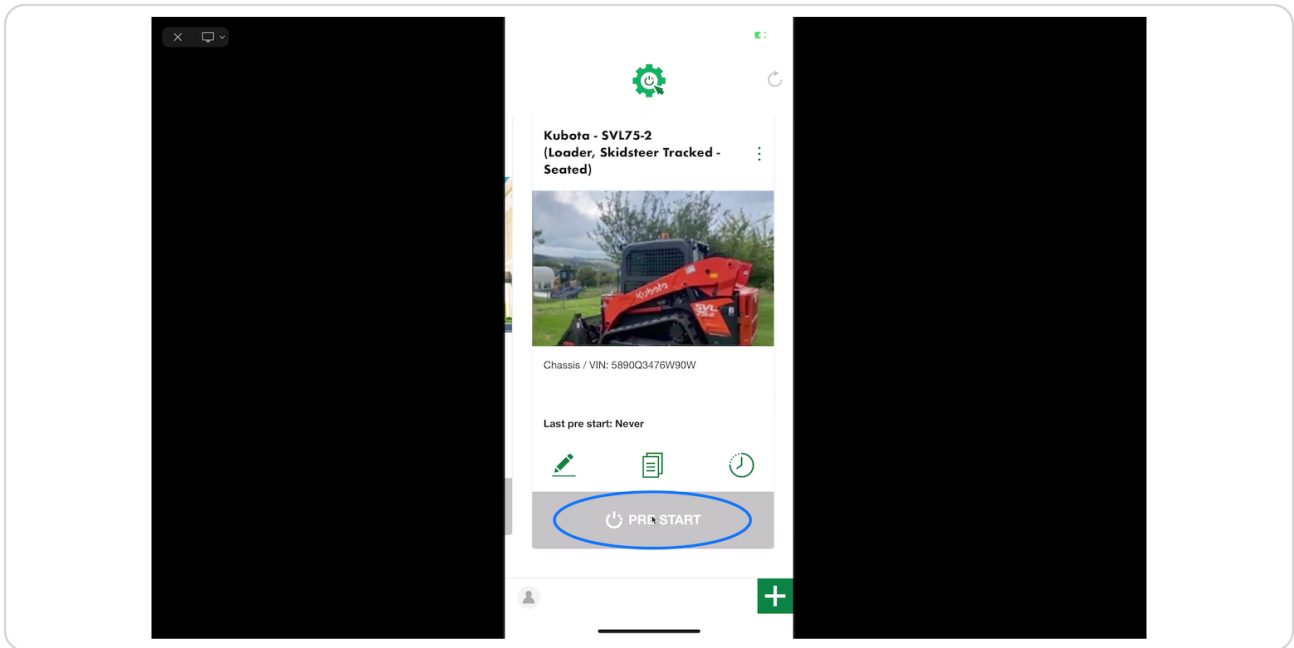
April 6, 2023

Last Updated

April 6, 2023

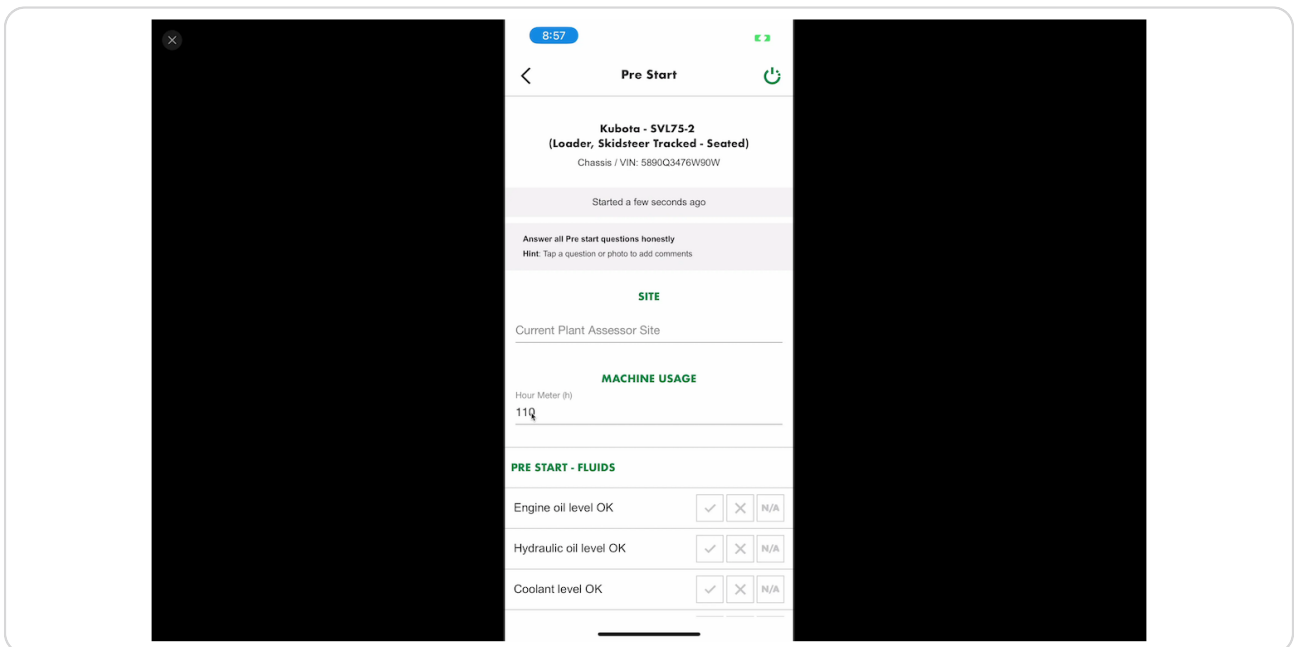
STEP 1

Once logged into the Pre Start Plus app click the Pre Start button on the machine you'd like to inspect



STEP 2

Update the usage reading



STEP 3

To add a comment, click on the question

Engine oil level OK N/A

Comments

Hydraulic oil level OK N/A

Comments


Coolant level OK N/A

STEP 4

To add a photo, click the camera icon at the end of each checklist section

AdBlue level OK N/A

Machine free from major leaks to engine, cooling system, hydraulics, drive line etc. N/A

 Camera

Gallery


INTERNAL INSPECTION

... is present & ... within inspection period N/A

All lights and reflectors are present and serviceable (if fitted, machines without lights must only N/A


STEP 5

Once you have answered all checklist questions, click complete



PRE START - OTHER

Is this item of plant free from any other safety fault which requires attention, if No then document issue in comments section. X N/A



COMPLETE

STEP 6

Your operational status and pre start report

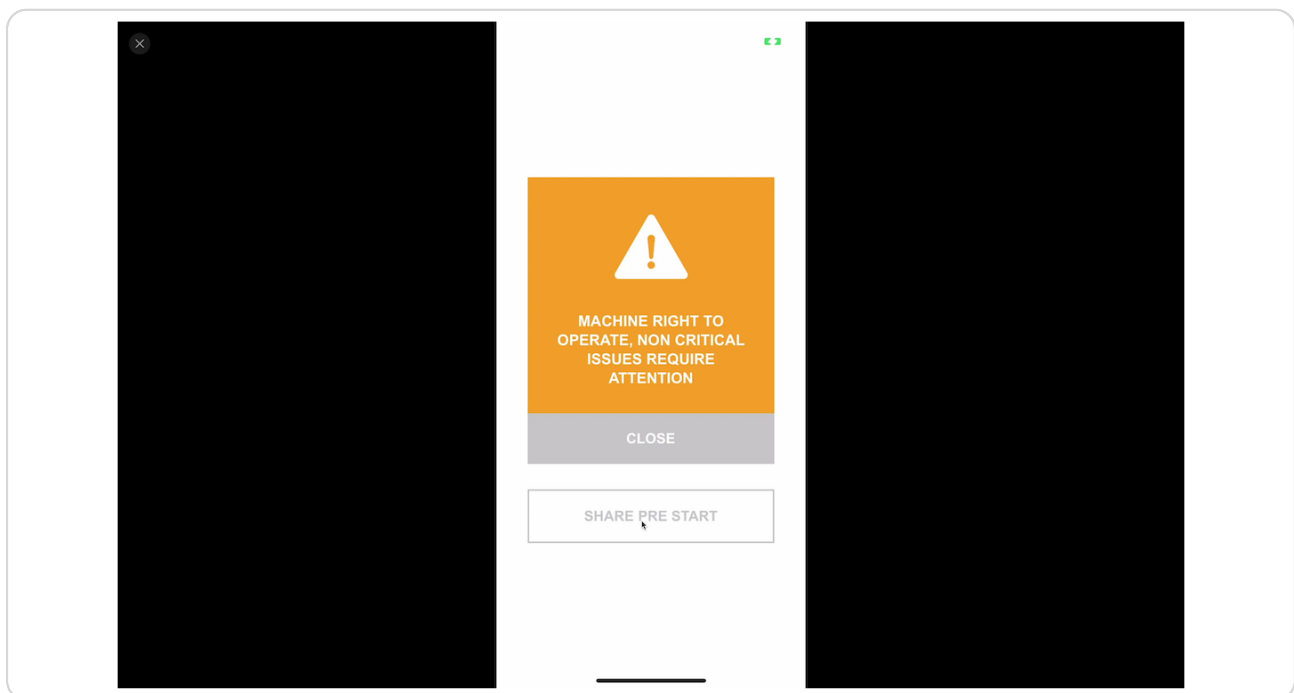
Once you have completed your pre start inspection, you will be given an operational status.

Green = Machine is right to operate

Orange = Non-critical issues identified, machine is still right to operate but actions are required.

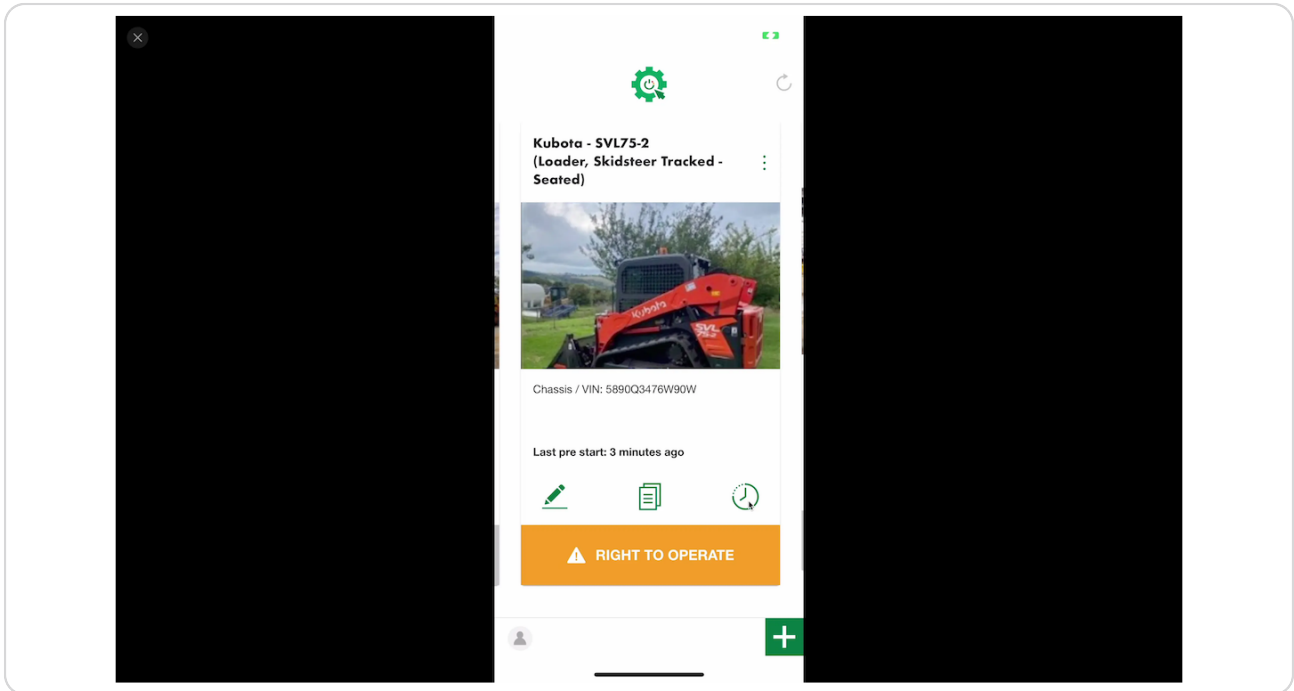
Red = Do NOT operate. Critical issues have been identified and must be actioned immediately.

To share the Pre Start report, click the **Share Pre Start** button. You will have the option to share a link via SMS, email or social apps.



STEP 7

Click on the clock icon to view the machine's Pre Start history

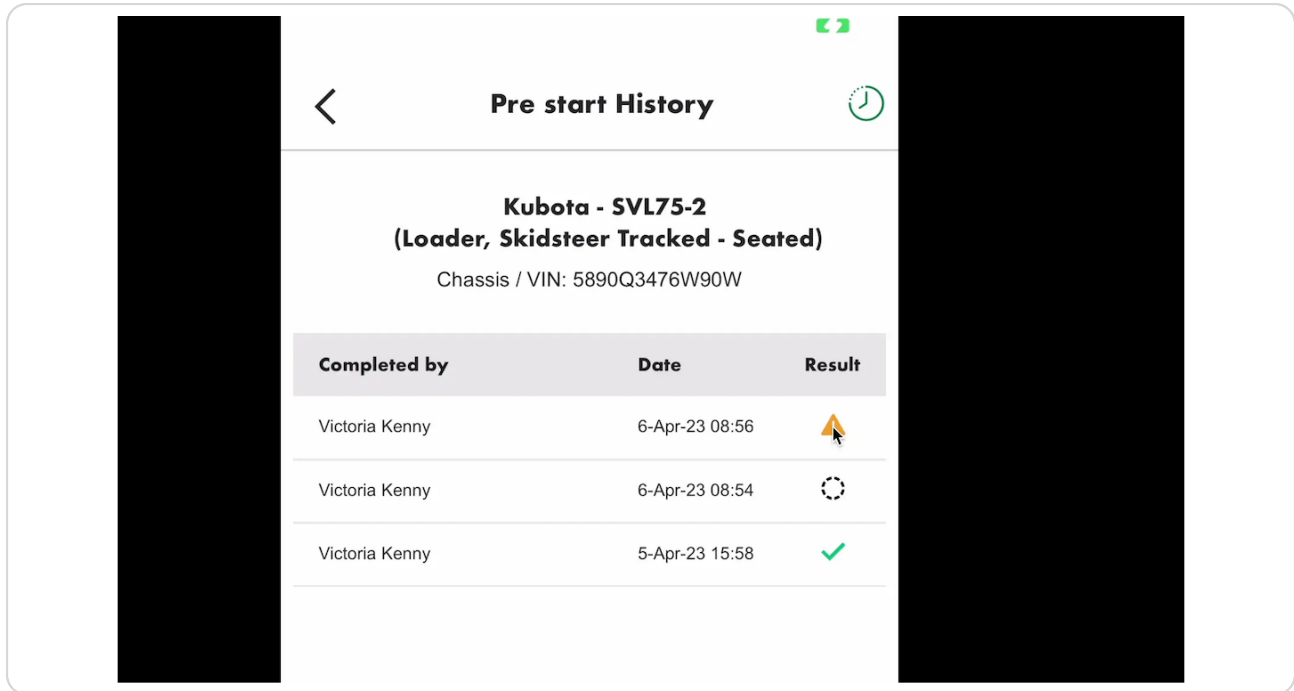





STEP 8

Viewing previous reports

Clicking the Clock icon shows you the history of all pre starts recorded against a machine. Each pre start is time stamped and records the name of the person who conducted the pre start.

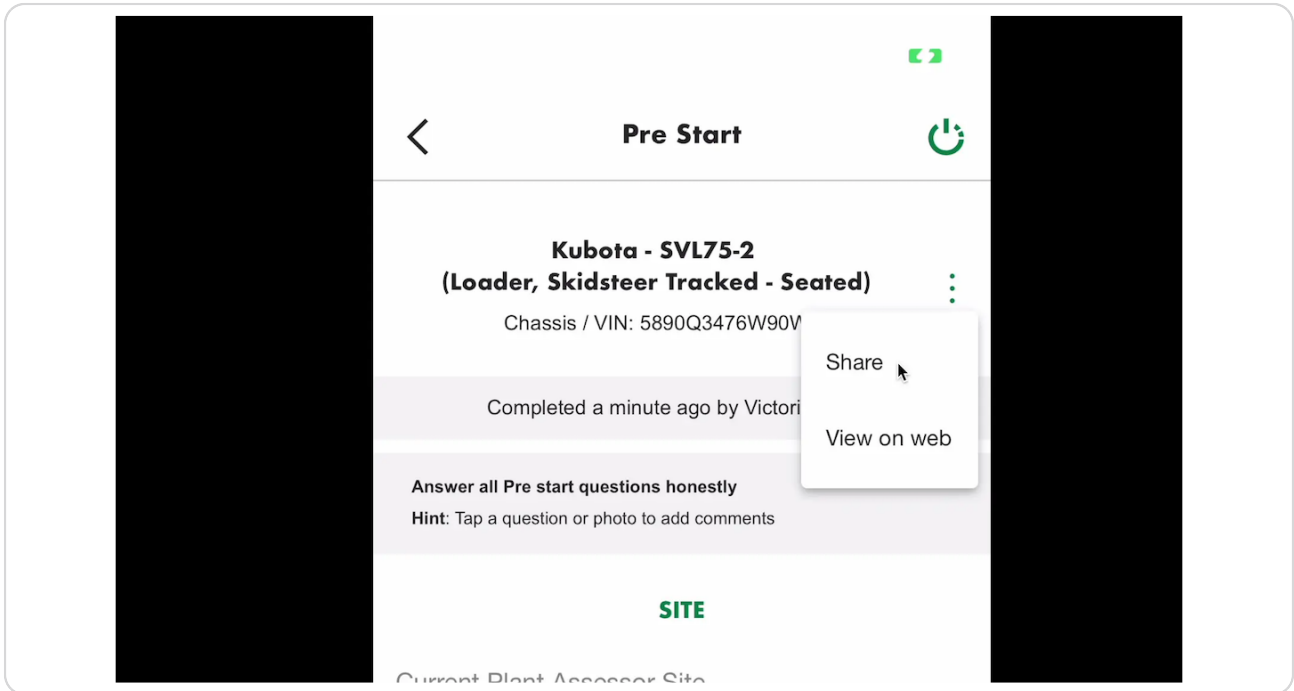
To view the report, click the icon in the Result column.



Completed by	Date	Result
Victoria Kenny	6-Apr-23 08:56	
Victoria Kenny	6-Apr-23 08:54	
Victoria Kenny	5-Apr-23 15:58	

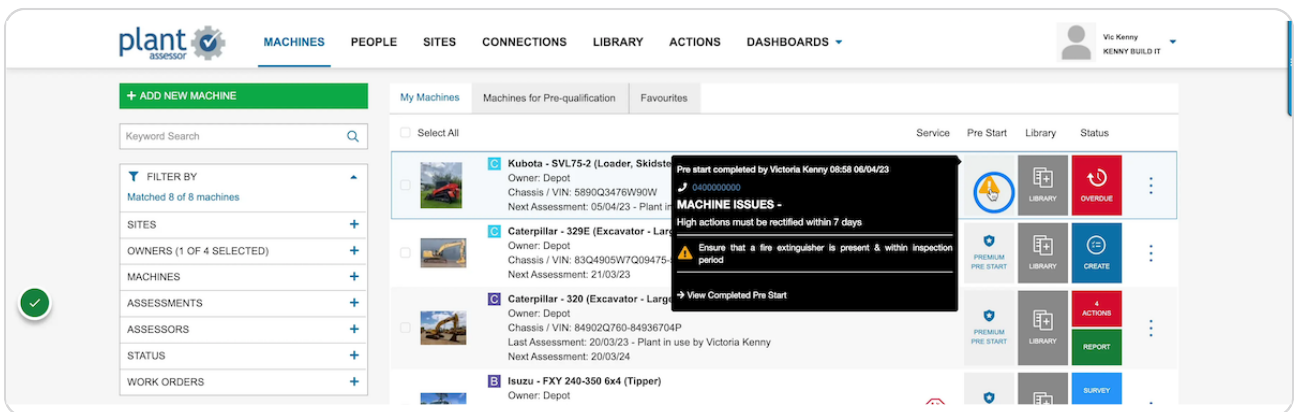
STEP 9

Share the report by clicking the ellipsis menu and clicking share



STEP 10

All pre start data is automatically synced to your Plant Assessor account.



STEP 11

Click View completed Pre Start to view the full report

The screenshot displays the 'plant assessor' web application interface. The top navigation bar includes 'MACHINES', 'PEOPLE', 'SITES', 'CONNECTIONS', 'LIBRARY', 'ACTIONS', and 'DASHBOARDS'. A user profile for 'Vic Kenny' is visible in the top right. On the left, there is a sidebar with a search bar and filter options for 'SITES', 'OWNERS', 'MACHINES', 'ASSESSMENTS', 'ASSESSORS', 'STATUS', and 'WORK ORDERS'. The main content area shows a table of machines with columns for 'Service', 'Pre Start', 'Library', and 'Status'. A modal window is open over the table, displaying a 'MACHINE ISSUES' notification for a Kubota machine. The notification text reads: 'Pre start completed by Victoria Kenny 08:58 06/04/23', '0400000000', 'MACHINE ISSUES - High actions must be rectified within 7 days', and 'Ensure that a fire extinguisher is present & within inspection period'. A blue circle highlights the 'View completed Pre Start' link in the modal.

Machine	Service	Pre Start	Library	Status
<input type="checkbox"/> Kubota - SVL75-2 (Loader, Skidste... Owner: Depot Chassis / VIN: 5890Q3476W90W Next Assessment: 05/04/23 - Plant li...			LIBRARY	OVERDUE
<input type="checkbox"/> Caterpillar - 329E (Excavator - Lar... Owner: Depot Chassis / VIN: 83Q4905W7Q09475- Next Assessment: 21/03/23		PREMIUM PRE START	LIBRARY	CREATE
<input type="checkbox"/> Caterpillar - 320 (Excavator - Larg... Owner: Depot Chassis / VIN: 84902Q760-84936704P Last Assessment: 20/03/23 - Plant in use by Victoria Kenny Next Assessment: 20/03/24		PREMIUM PRE START	LIBRARY	ACTIONS REPORT
<input type="checkbox"/> Isuzu - FXY 240-350 6x4 (Tipper) Owner: Depot			LIBRARY	SURVEY

